



International frameworks to access and use genetic resources

PRO GRACE final conference

October 10, 2025

Szonja Csörgő
Legal Counsel, Bejo Zaden

TOPICS FOR TODAY

About Bejo

Use of genetic resources in plant breeding

Bottlenecks in accessing and using genetic resources

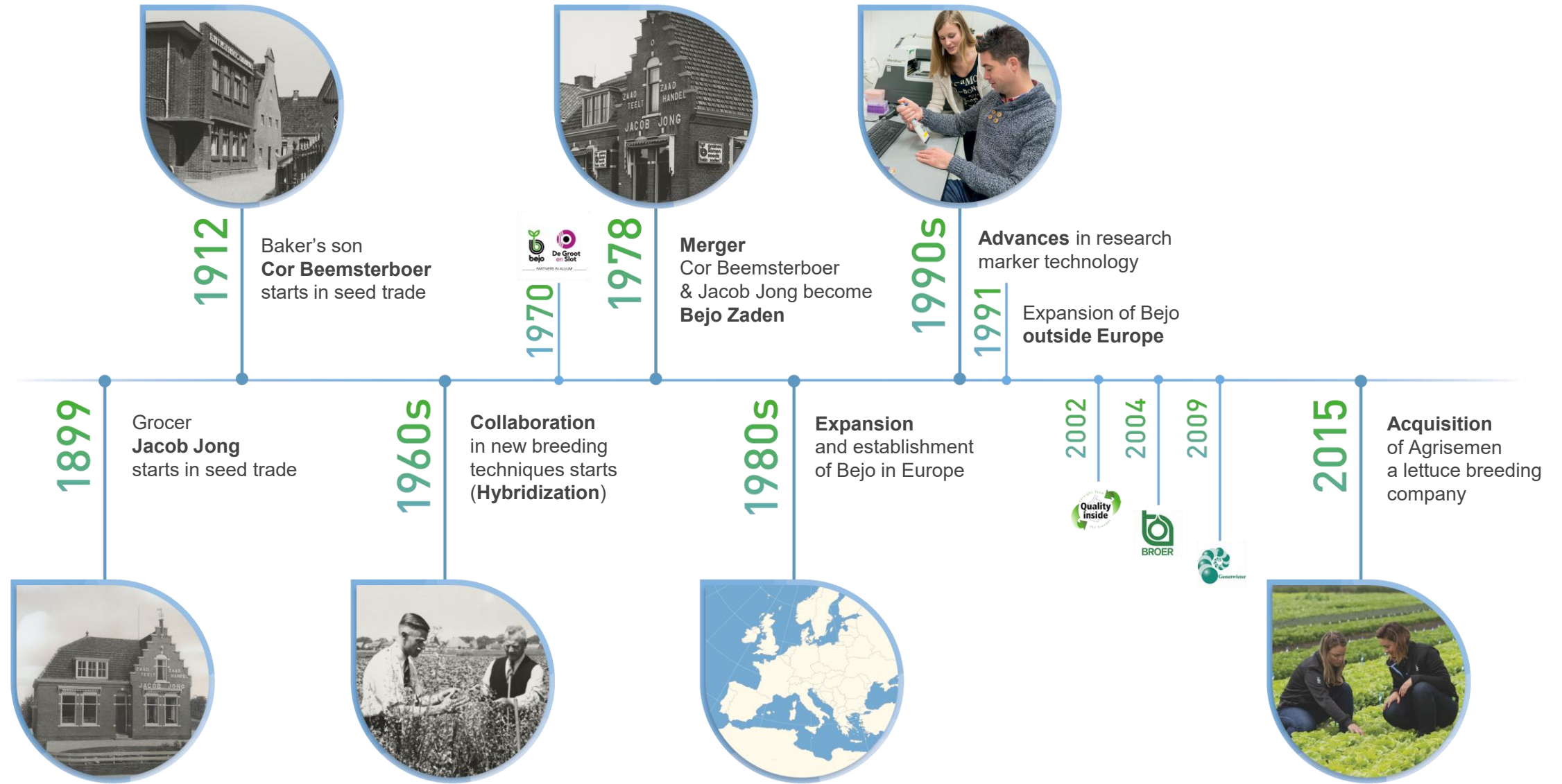
Legal and regulatory environment

Working with genetic resources – examples from practice

About Bejo



EXPLORING SINCE

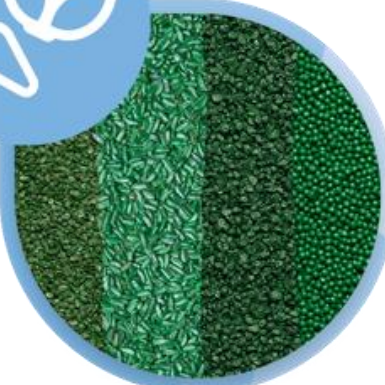


TODAY



2,200

Employees
worldwide



Broad
assortment

40+
crops

1000+
varieties



Organic
Program

35+
crops

170+
varieties



Breeding,
production &
sales

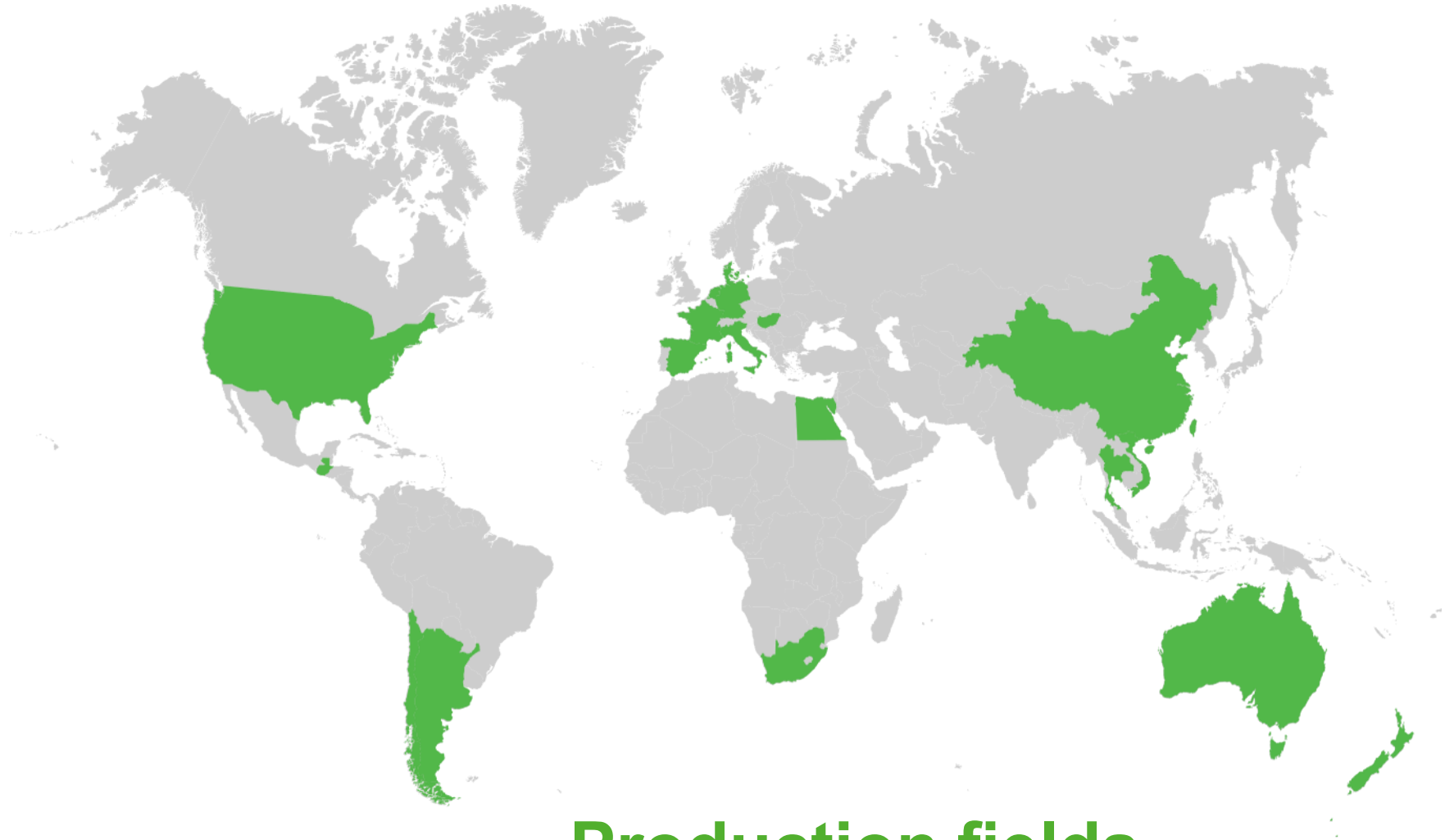
around
the world

THE WORLD OF BEJO



Breeding stations

THE WORLD OF BEJO



Production fields

THE WORLD OF BEJO



Sales offices

THE WORLD OF BEJO



Sales activities

THE WORLD OF BEJO

Warmenhuizen

The Netherlands

- ▶ Quality control, processing and storage of globally produced Bejo seed
- ▶ Research Center



BRASSICAS

ROOTED
CROPS

ALLIUM

FRUIT
CROPS

LEAFY
CROPS



**AN INNOVATIVE AND INTERNATIONAL
FAMILY COMPANY**

**RESEARCH, BREEDING, PRODUCTION, TREATMENT
AND SALES OF PREMIUM QUALITY SEEDS**

**RESPECT FOR NATURE, PEOPLE AND
ENVIRONMENT**

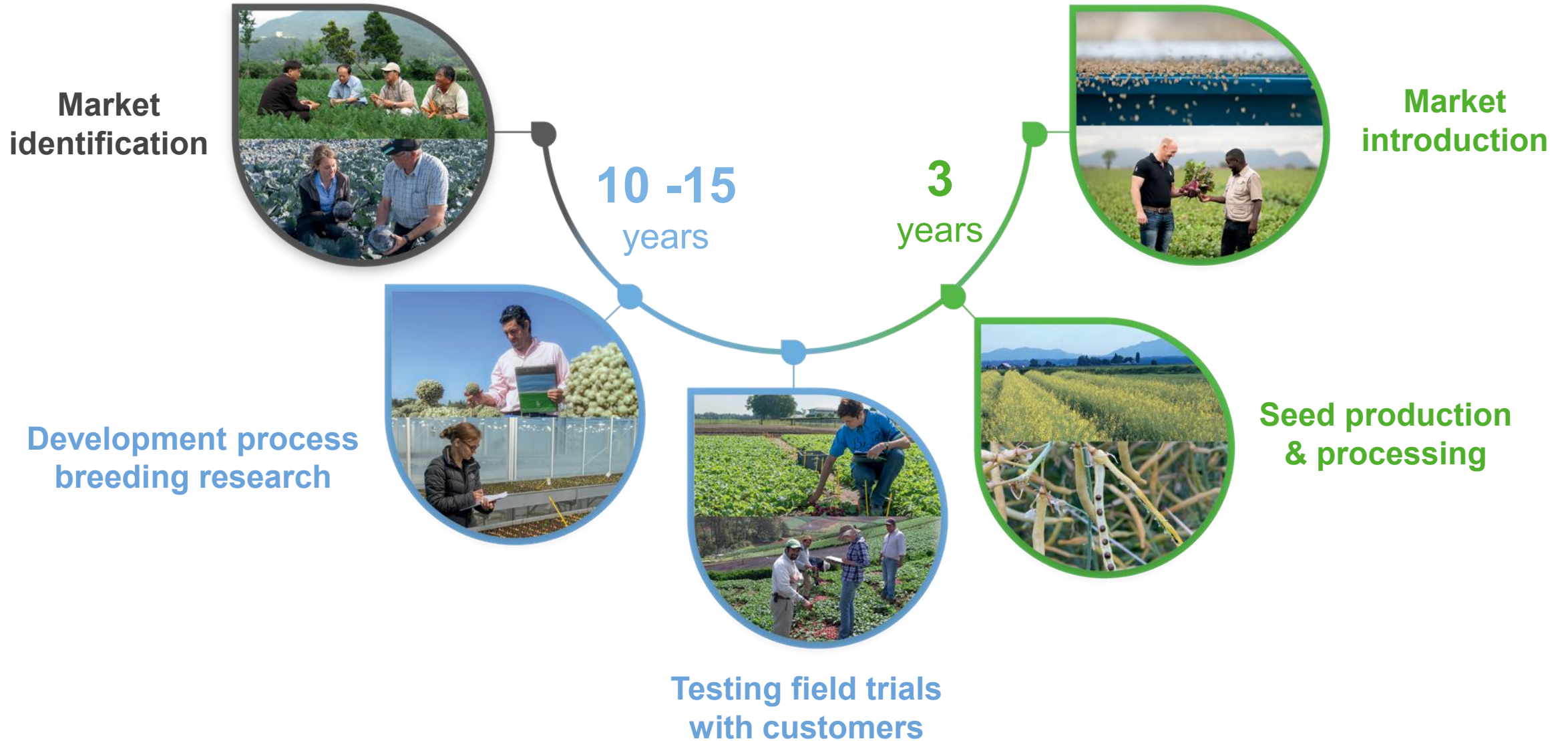
**GLOBALLY LEADING IN OPEN FIELD
VEGETABLE CROPS**

OUTSTANDING QUALITY

Use of genetic resources in plant breeding



VARIETY DEVELOPMENT CYCLE



Genetic resources used in commercial breeding

- Depends on the crop...

But in general terms:

90-95% of GRs used are modern varieties (i.e. commercial PGR)

5-10% of GRs use are non-commercial PGR



Genebank material
Research material
Landraces
Wild relatives



Bottlenecks & regulatory frameworks



How much information is available on the PGR?

How easy/difficult it is to work with the PGR?

How can the PGR be accessed and used?

Importance of pre-competitive research:

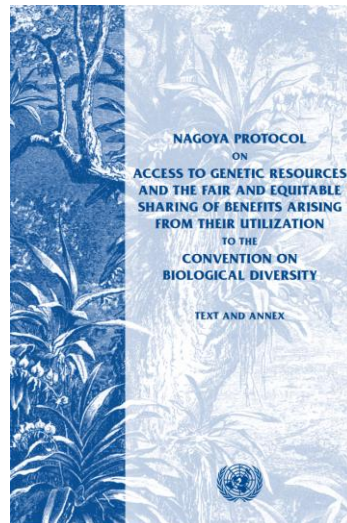
- Research projects focusing on defined traits
- Joint characterization efforts
- Joint efforts for pre-breeding

LEGAL & REGULATORY ENVIRONMENT

Multiple legal frameworks co-exist at multiple levels



**Convention on
Biological Diversity**



20.5.2014

EN

Official Journal of the European Union

L 150/59

**REGULATION (EU) No 511/2014 OF THE EUROPEAN PARLIAMENT AND OF THE COUNCIL
of 16 April 2014**

**on compliance measures for users from the Nagoya Protocol on Access to Genetic Resources and
the Fair and Equitable Sharing of Benefits Arising from their Utilization in the Union**

(Text with EEA relevance)



NATIONAL ABS LAWS

LEGAL & REGULATORY ENVIRONMENT

Legal reality:

- BEJO crops – 40+ vegetable crops
- Treaty Annex I – only 7 vegetable crops are covered: asparagus; beet; brassicas; carrot; beans; eggplant; potato
- For 30+ crops – CBD/NP/national ABS laws apply



Practical implications:

- Difficult to navigate the legal complexity in a pragmatic way
- Some material we have to avoid using
- For genebank accessions, we almost only access from CGN where everything comes with SMTA

WHAT DO WE THINK?

Conservation of GRs is of key importance for plant breeding

Genebanks are very valuable partners

Genetic resources should be available for use in research & breeding

Conditions for access, use and benefit sharing should be workable

WHAT DO WE DO?

Bejo supports conservation efforts at national & regional level



Financial support
Regeneration of material on request

EVA
European Evaluation Network

**Bejo is part of the carrot
evaluation network**

Bejo uses the SMTA & fulfills its obligations



CATEGORY_NEWS

Dutch seed company Bejo pays into Benefit-sharing Fund

December 3, 2020

The Dutch vegetable seed company Bejo has made a payment to the Benefit-sharing Fund of the International Treaty on Plant Genetic Resources for Food and Agriculture (ITPGRFA). This is because Bejo has developed a commercialised product using material obtained from the Multilateral System of the ITPGRFA through the Centre for Genetic Resources, the Netherlands (CGN).

WHAT DO WE WISH FOR?

Have only one system for PGRs – Treaty Annex I should cover all PGRs

Pragmatic approach allowing for the use of PGRs in commercial plant breeding

Predictable, workable, business-friendly framework for ABS

Mutual respect & trust and good collaboration between actors within the PGR community

QUESTIONS?





Exploring nature
never stops