



# PRO-GRACE

PROMOTING A PLANT GENETIC  
RESOURCE COMMUNITY FOR EUROPE





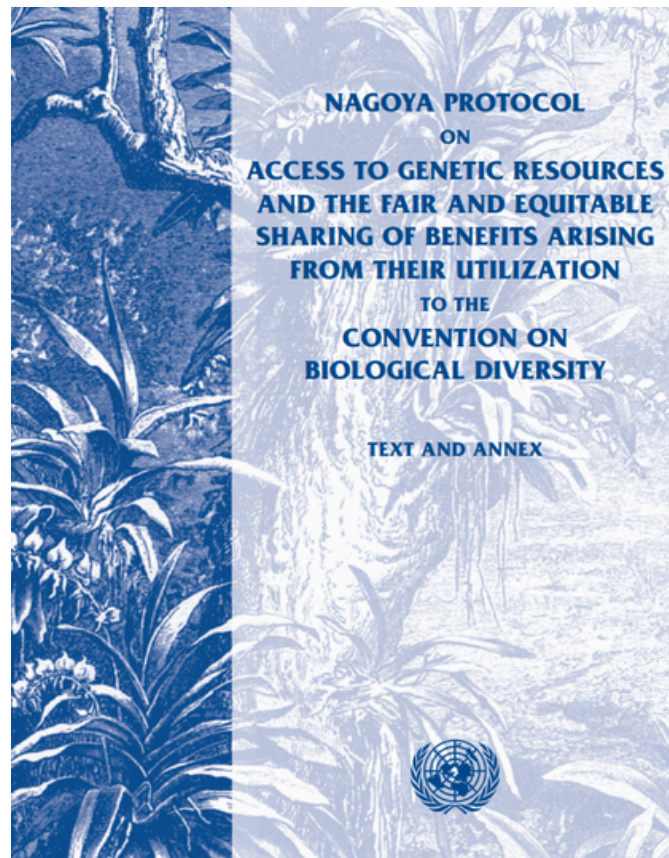
Consortium partners



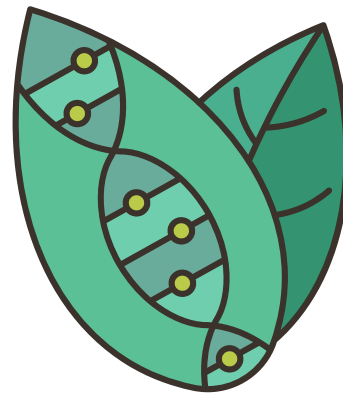




Convention on  
Biological Diversity



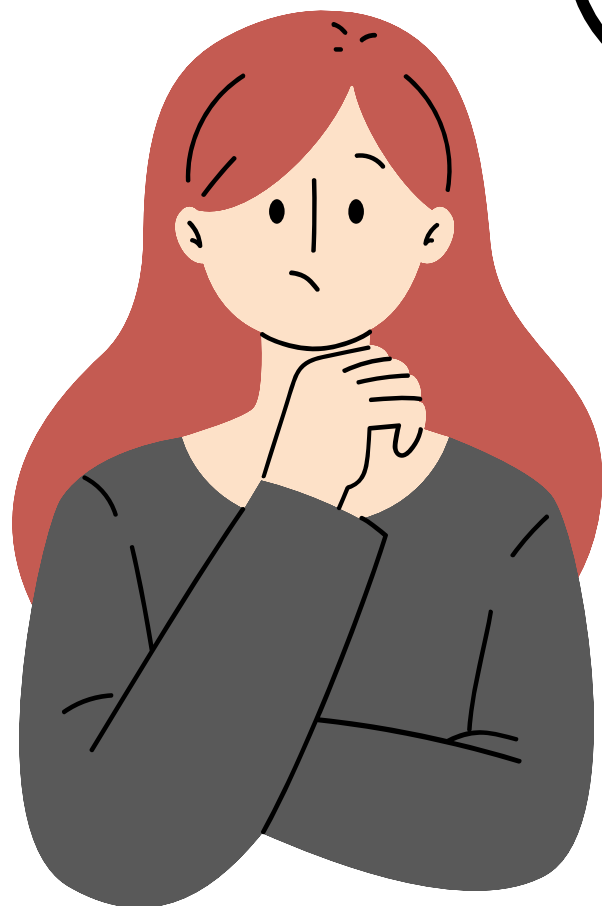
***Plant genetic resources for food and agriculture are any genetic material of plant origin of actual or potential value for food and agriculture.***



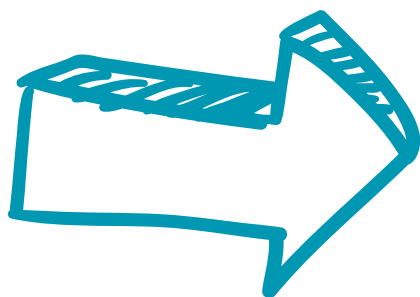
Definition of the International Treaty on Plant Genetic Resources for Food and Agriculture



**The International Treaty**  
ON PLANT GENETIC RESOURCES FOR FOOD AND AGRICULTURE



**A concept of a novel  
Research  
Infrastructure focused  
on the study,  
conservation,  
management and  
sustainable use of  
plant genetic resources**



Catalogue, describe,  
preserve and enhance  
European plant  
biodiversity



Translate the results  
into conservation  
practices and  
agricultural  
innovation



In collaboration with  
global organizations  
dedicated to plant  
genetic resources



<http://eurisco.ecpgr.org/>


**eurisco**  
Finding seeds for the future

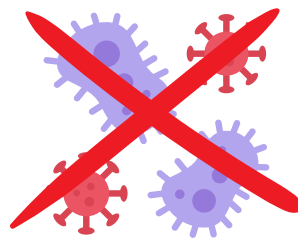
## The European Search Catalogue for Plant Genetic Resources

maintained by

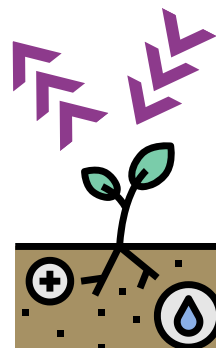




Developing quality  
certification of  
genebank  
operations

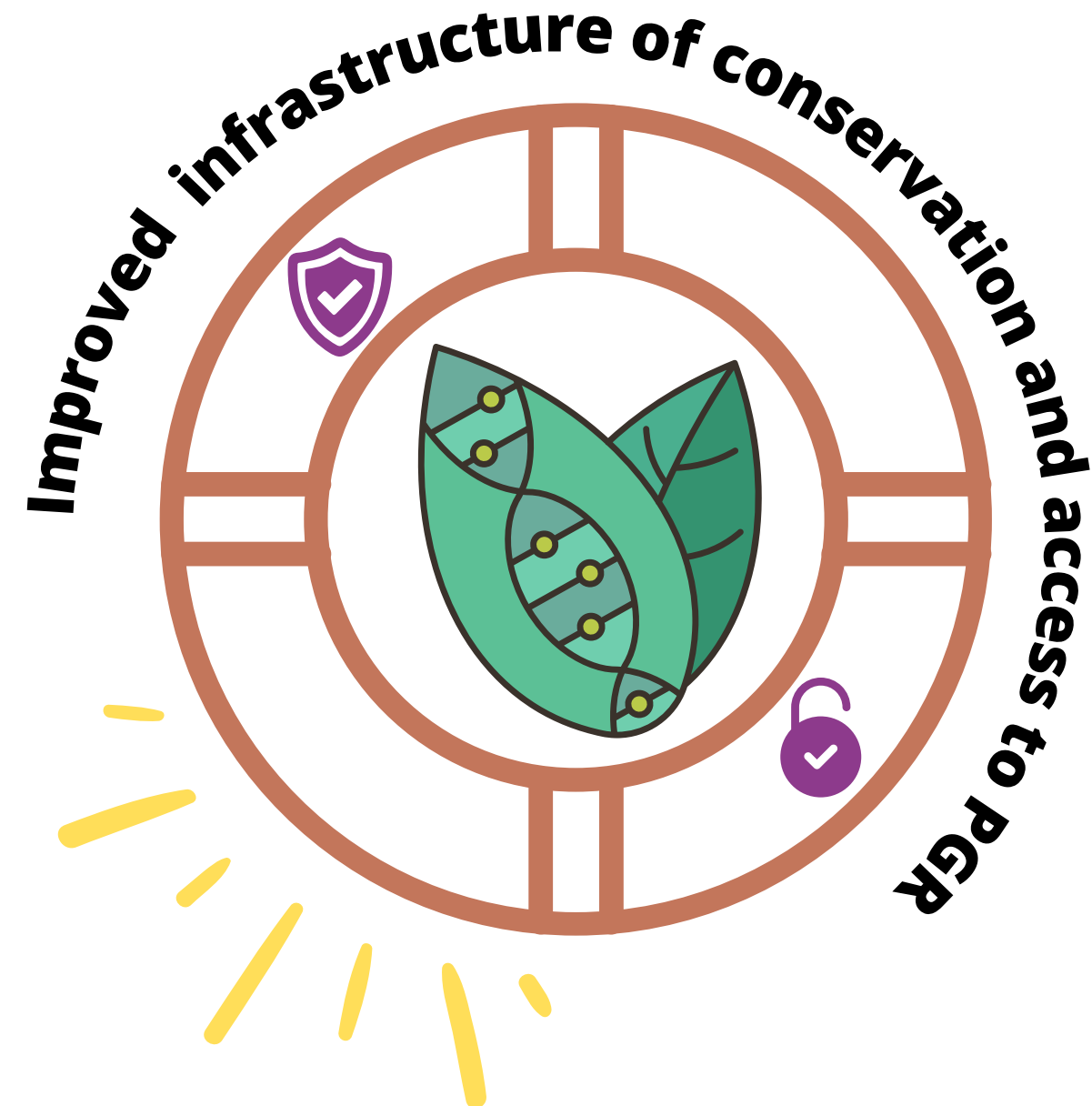


Developing methods and  
standards for the  
monitoring and eradication  
of plant pathogens



Developing methods  
and standards for next-  
generation ex situ and  
in situ management

**Framework for quality-certified  
management of ex situ and  
in situ collections**



Developing methods and  
standards for  
conservation/sampling of  
heterogeneous/allogamous/clonal  
accessions with minimum loss of  
genetic diversity

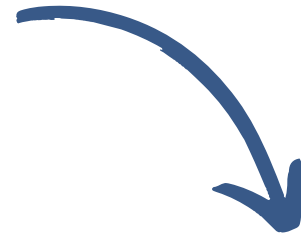


Developing methods and  
standards for safety  
duplication of accessions and  
minimization of viability loss

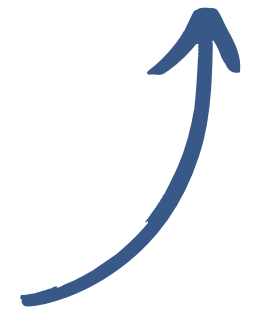
RI



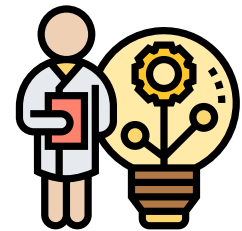
P  
G  
R  
S



End-users



**advanced scientific services**



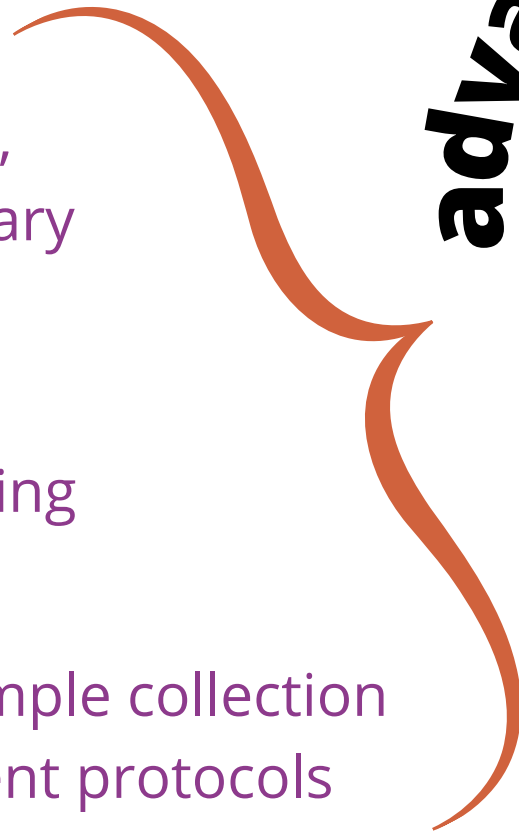
Genomic, metabolomic,  
bioinformatic, phytosanitary  
technologies



DNA barcoding



Simplified sample collection  
and shipment protocols

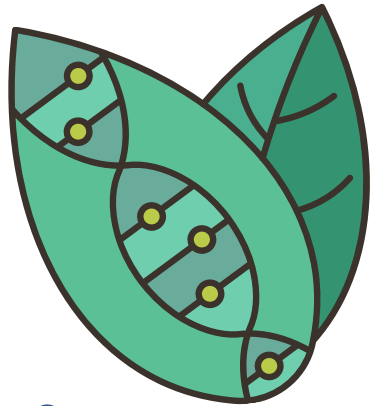




# Crop-specific methods for crop evaluation

Standards &  
protocols of:

PGRs



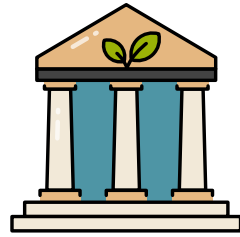
Agricultural practices



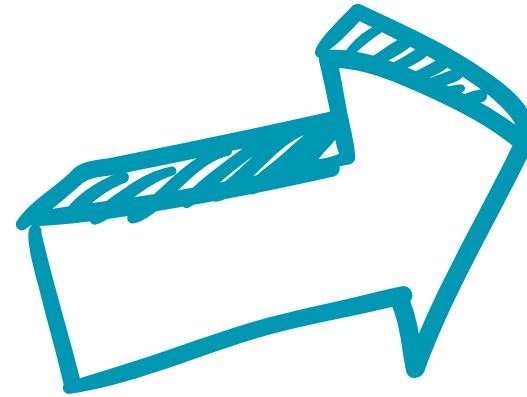
Suggestions from  
end-users







Identification of a  
governance structure  
and financial plan fit for  
the purpose



**A concept of a novel RI  
focused on the  
conservation and study  
of PGR**



A technical analysis of the  
present RI ecosystem, filling  
the gaps present and  
avoiding overlaps and  
duplications



Identification of the  
main stakeholders,  
promoters, and  
utilizers of the  
proposed RI

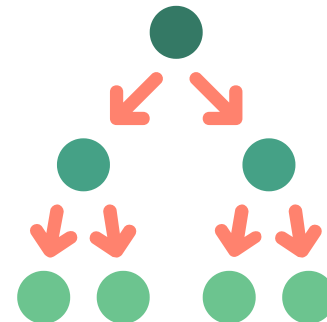


Identification of the  
structure (distributed  
vs central) and  
services provided by  
the proposed RI

**Multi-stakeholder and  
multi-directional approach to  
communication, dissemination,  
exploitation and training**



Communication with the project stakeholders, European RIs, governmental and international organizations, NGOs and the general public



Dissemination of the project's results through the project's website, at scientific conferences and through the publication of e-books, reviews, and white papers



Training of relevant stakeholders on the ex situ and in situ management, evaluation and valorisation of Plant Genetic Resources and the associated know-how



Exploiting the achieved results